

TOWNHOME

PLAN
TH16

1,235 SQ.FT.

2 BED

2.5 BATH

FISH CREEK
EXCHANGE



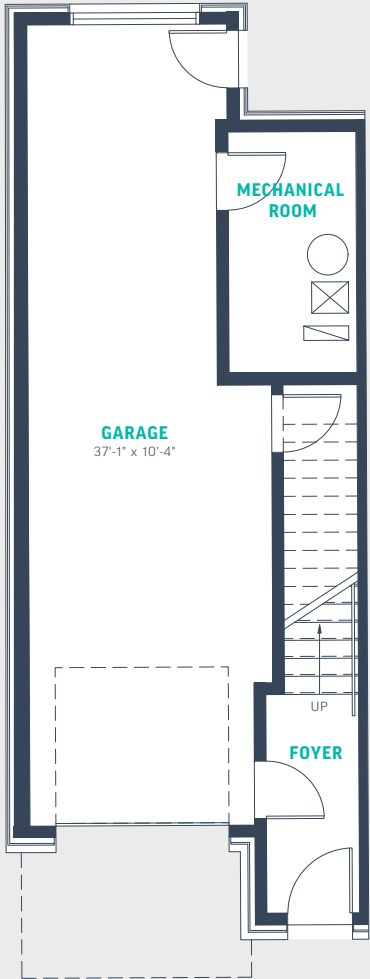
TOWNHOME
Plan TH16

1,235 SQ.FT.
3 STOREY
2 BED
2.5 BATH

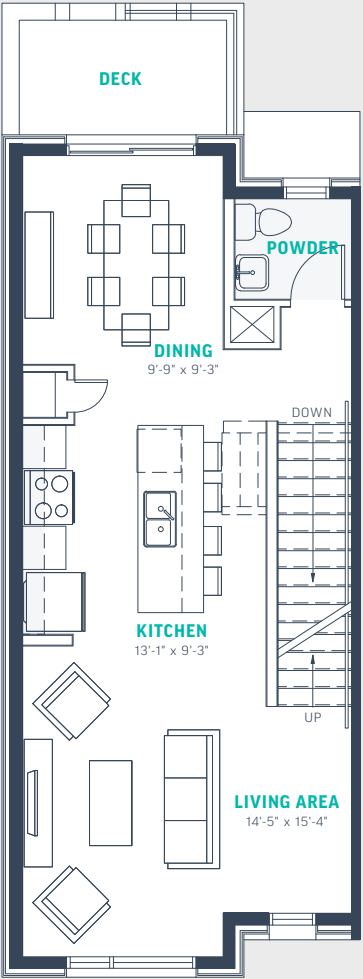
Featuring dual upper floor master suites and a private deck off the main floor dining area, this open-concept design makes optimal use of space.

- Convenient kitchen island with breakfast bar
- Tandem double garage
- Ample storage space throughout
- Walk-in master closets

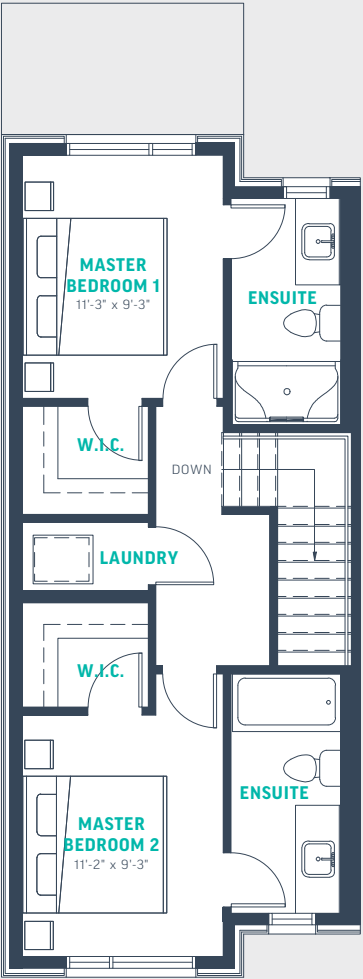
Loaded with thoughtful features, this plan includes a full range of sought-after details that make home life a breeze.



59 SQ.FT.
ENTRANCE



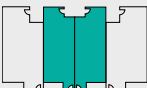
588 SQ.FT.
MAIN FLOOR



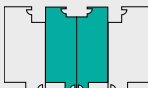
588 SQ.FT.
UPPER FLOOR



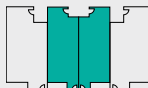
North



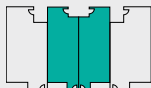
BLOCK 3



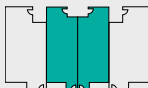
BLOCK 4



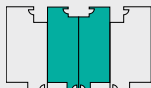
BLOCK 5



BLOCK 6



BLOCK 7



BLOCK 8

*The developer reserves the right to change plans, specifications, pricing, promotions, incentives, features, elevations, floor plans, designs, materials, amenities and dimensions without notice in its sole discretion. All renderings, colour schemes, floor plans, maps and displays are artists' conceptions and are not intended to be an actual depiction of the home or its surroundings. Homeowner association fees may be required. E&OE

FISH CREEK

EXCHANGE



GRAYWOOD
DEVELOPMENTS

FishCreekExchange.ca